

DVS

Professional DVR

(Digital Video Surveillance System)

(Digital Video Recorder)

Remote Client Manual

Released September 2004



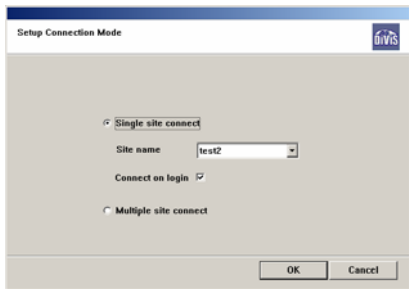
- Select “**New**” to setup a new site to connect to

The screenshot shows a software interface for managing site information. The main window is titled "Add, Delete and Edit site information" and features a "DVS" logo in the top right corner. A sub-dialog box titled "Site Information" is open in the center, containing the following fields: "Site name" with the value "test", "Method" set to "TCP/IP" with a "Property" button next to it, "IP/Tel no." with the value "192.168.1.25", "User name" with the value "administrator", and a "Password" field. Below these fields are "OK" and "Cancel" buttons. The main window also has "New", "Edit", "Delete", and "Close" buttons at the bottom.

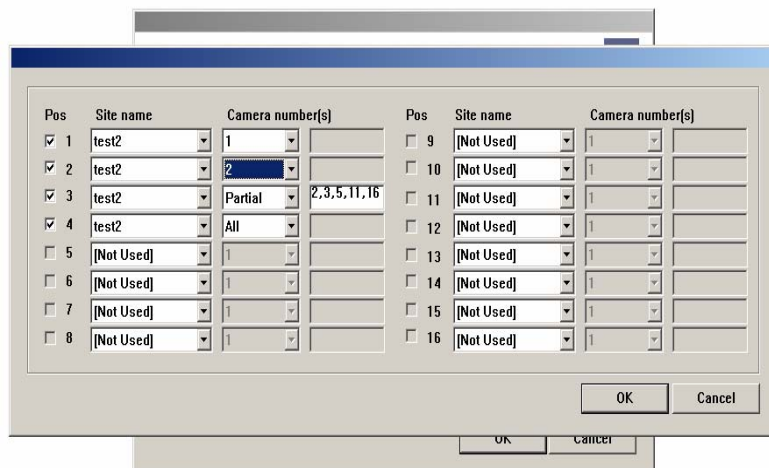
- Give the site a name
- Select connection type
- Input the static IP address of the location you wish to connect to or the DNS name you have registered for from an IP service. **(see the remote setup manual)**
- Input the username and password of a user that was created in the “DVS Main System” for remote access
- Click “OK”

NOTE: If you have dynamic IP at the main system location we recommend that you sign up for a FREE DNS name with a company that deals with dynamic IP solutions like noip.com. When you acquire a FREE DNS name, you can use that name as the IP address in the “IP/Tel no.” field instead of an actual address.

When site information is entered successfully, the new site will be listed in the window of available sites to connect to under the current users account.



If you have multiple DVS DVR systems to connect to at one time you can select “Multi Site Connection” Following picture is one example on how to setup settings for multiple site connections.



Site Name: Select the site to be displayed in the camera position

Camera Number: Select the number of the camera you would like to view in that position

- If you select “**All**” this camera will display all cameras in a sequential switching mode.
- If you select “**Partial**” List the numbers of the cameras you wish to sequentially switch through

Pos: Put a checkmark in this box to connect automatically upon login

Using the DVR Remote Client Software

Upon executing the Remote Client Software and setting up your site and connection information

the login dialogue box appears





- Select username from the list
- Enter password and click “Login”



Upper Right Hand Corner Status Window

- **Date/Time:** It indicates the present time and date indicated by the system.
- **Login name:** ID, provided to control Network application .
- **Event Information:** Indicates when event (Motion detection or Sensor trigger) happens in DVS main System. Displays when notification is enabled.
- **Transfer Status :** indicating the connecting speed as bench mark only. If no status bars are moving across the graph you have no data stream transfer.

Click the  button to enable control of any PTZ cams on the system

Click the  button to modify image quality remotely

Click the  button to control image compression.

- The higher the compression the lower the quality of the video

Microphone: Click this button to talk remotely to the local computer

Speaker: Click this button to listen to the local computer remotely

- Before clicking the speaker button, double click the camera of the audio channel you wish to hear and make it full screen. Then click the speaker button to listen to that channel of audio.

Duplex: Click this button to enable microphone and speakers simultaneously

- **NOTE:** Must use amplified microphones at local and remote locations for remote audio

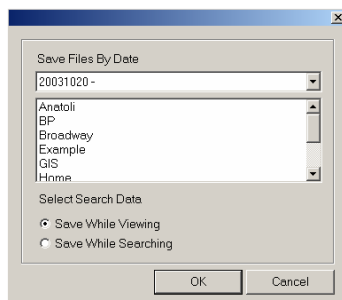
Search: Search for recorded files stored on the remote system

Setup: Alter DVR main system setting remotely

Remote Search: Search the DVR Main System for recorded files

Recorded Data Searching

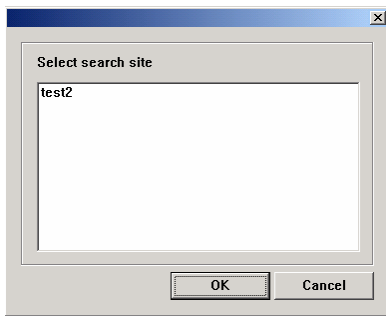
When clicking the “**Search**” button the following dialogue box appears



- Select the site you wish to do a search for recorded data, on the Remote DVR-Net system

Remote Recorded Data Search

When clicking the “**Remote Search**” button the following dialogue box appears



- Select the site you wish to do a search for recorded data, on the Main DVR System

Refer to the “**DVS Main System**” users manual for playback instructions as the interface is identical to main system playback

Dial-Up Connection

On the DVS Main System you must create a connection to receive incoming calls.

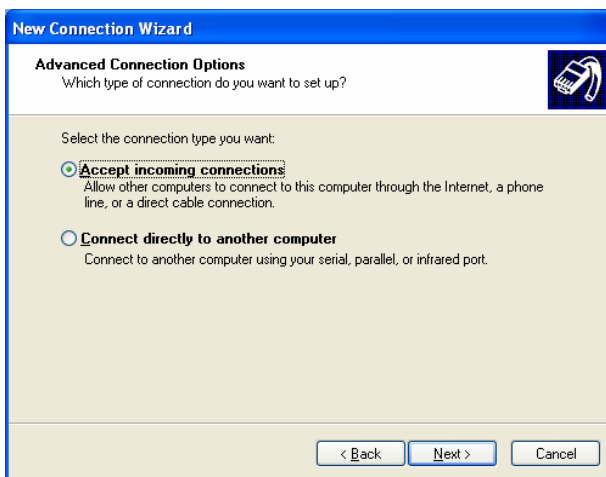
Start the “Network Connection Wizard “. The following dialogue box appears [Windows XP Operating System]



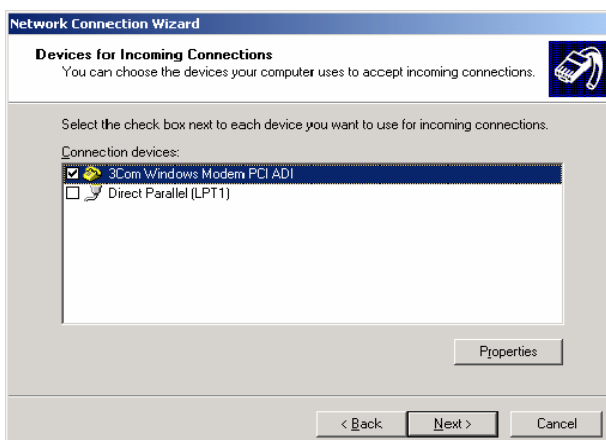
Click 'Next'.



Select "Set up Advanced Connection" then "Next"

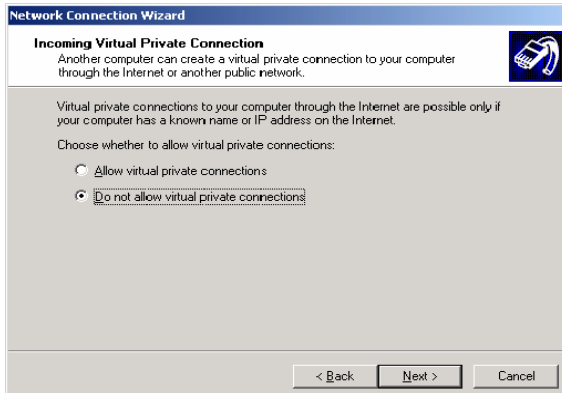


Select "Accept Incoming Connections" then "Next"



Select the modem to be used for the incoming connection

Click “Next”

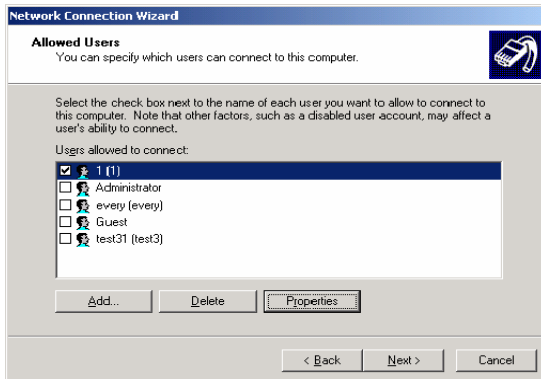


Select “Do Not Allow VP Connection” then “Next”

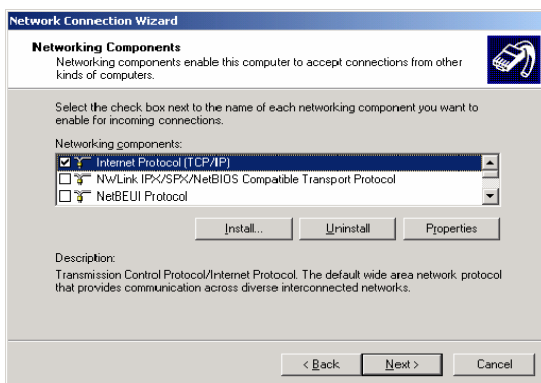


Select “Add” and create a new user able to access the incoming connection.

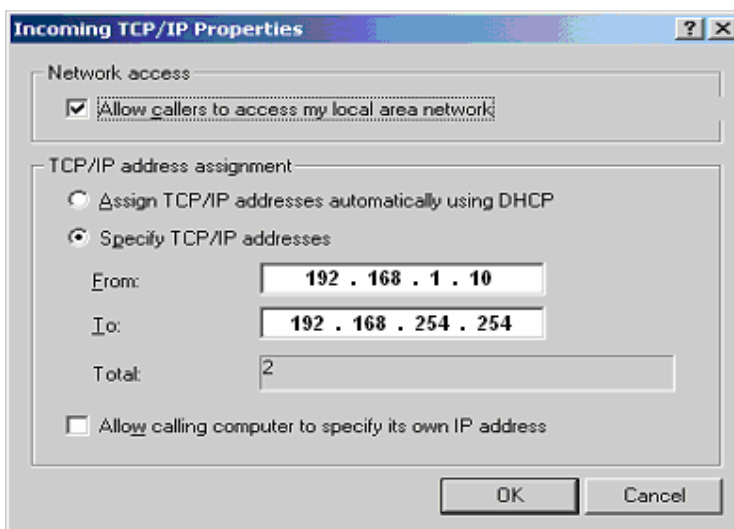
- **NOTE:** We recommend using the same user name and password that is used for accessing the DVS Main System to minimize username and password confusion



Make sure the new user check box is checked



Highlight TCP/IP and click "Properties"

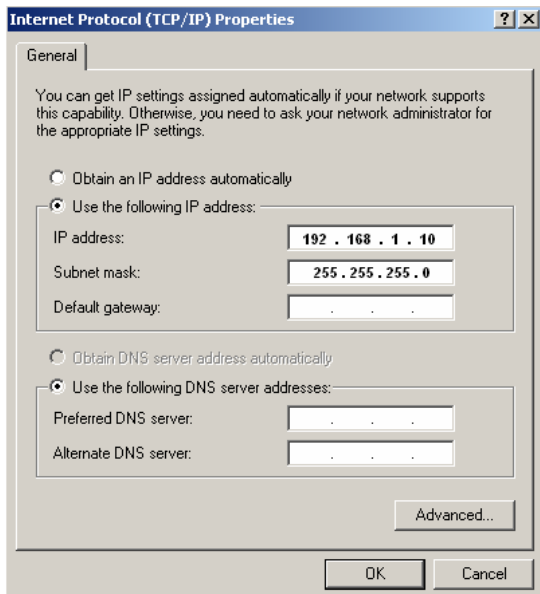


NOTE: Setup the dialogue box exactly like the one above.

Finish the Setup Wizard

Set Static IP for DVR Main

- Next enter the **“Network Connections”** in the **“control panel”**
- **“Right Click”** on the LAN connection of the system
- Highlight **“Internet Protocol TCP/IP”** and click **“Properties”** button



Select **“Use the Following IP”** and specify the following address

- IP Address 192.168.1.10
- Subnet Mask 255.255.255.0

Click **“OK”** to complete setting up the DVR Main System IP Configuration for Dial Up Connection

Remote Client Dial In Setup

Start the **“Network Connection Wizard”**. The following dialogue box appears [Windows XP Operating System]



Click 'Next'.

- Select **“Connect to Network at my Workplace”** then “Next”
- Select **“Dial Up Connection”** then “Next”
- Enter a Name for this connection, then “Next”
- Enter the Phone Number to be Dialed, then “Next”
- Click **“Finish”** to complete the wizard

To Connect to the DVS Main System via dialup:

- Execute the newly created “Dial-Up” connection created
- Enter the Username & Password created for dial in access on the DVS Main System
- Click Connect

When a Dial-Up connection is established, an icon will appear in the system tray of the remote computer.

- Next execute the DVR Remote client software and setup a site connection with an IP address of 192.168.1.10 and a proper username and password listed in the DVS Main System for remote access as discussed earlier in this manual.